

NAVIGATION MARKS

- Lighthouse, major, minor light
- Beacon, port, starboard
- Safe water, isolated danger
- Solar buoy, port, starboard
- Pillar buoy, port, starboard
- Moorings buoy, yachting buoy
- Lead, front, rear
- Special Marks (yellow cross topmark) are not primarily to assist in navigation, but indicate special features.

CARDINAL MARKS

- Indicates safe water to the North
- Indicates safe water to the South
- Indicates safe water to the East
- Indicates safe water to the West

LIGHT CHARACTERISTICS

- Fixed
- Flashing
- Group flash
- Quick flash
- Long flash
- Occulting
- Isophase
- Indicates light navigation mark
- Green
- Red
- White
- Yellow
- Blue
- Period in seconds
- Focal plane height above MHHW
- Luminous range in nautical miles

AUSTRALIA - WEST COAST
WESTERN AUSTRALIA
SHARK BAY
 Bellefin Flats to Denham
SCALE 1 : 50 000

DEPTHS
 Depths are shown in metres and decimetres, reduced to Sounding Datum, which is approximately Lowest Astronomical Tide.

HEIGHTS
 Heights are shown in metres. Underlined figures are drying heights above Sounding Datum. Overhead clearance heights are above Highest Astronomical Tide. All other heights are above Mean Higher High Water.

POSITIONS
 Positions on this chart are referenced to the Map Grid of Australia, Zone 49, based on the Geocentric Datum of Australia 1994 (GDA94). For GPS use, this approximates WGS84.

PROJECTION
 Universal Transverse Mercator

SOURCES
 From the latest information available to Department of Transport, 2016.

NAVIGATION MARKS
 IALA Maritime Buoyage System - Region A (Red to Port)

CHART AMENDMENTS
 The information provided on this chart is correct at time of publication. As this information is subject to change, ensure the latest version of the chart is used at all times and is kept up-to-date with reference to the following:
www.marine.gov.au

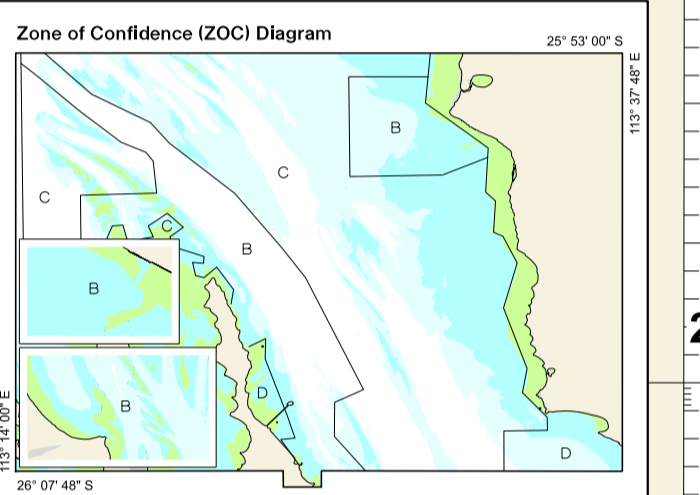
Notices to Mariners
 Changes of a safety or navigational nature will be reflected in Notices to Mariners. Current Notices are available from the DoT website at:
www.marine.gov.au

Navigable Waters Regulations
 Changes to Navigable Waters Regulations are published in the Western Australian Government Gazette. Regulations for Navigable Waters can also be found at:
www.marine.gov.au

Marine Protected Areas
 Refer to Department of Primary Industries and Regional Development (DPIRD) and Department of Biodiversity, Conservation and Attractions (DCA) publications for the latest information.

TIDAL INFORMATION AND SOUNDING DATUM

Place	Latitude	Longitude	Mean	Low	High	Mean	Low	High
	S	E	metres	metres	metres	metres	metres	metres
DENHAM	25°56'	113°32'	1.7	1.4	1.0	0.8	0.7	0.3
USELESS LOOP (Shoal water)	26°06'	113°25'	1.6	1.2	1.0	0.7	0.5	0.2
PILE 3	25°54'	113°12'	1.7	1.3	0.9	0.9	0.8	0.4
BEACON 12	25°58'	113°23'	1.5	1.1	0.8	0.7	0.7	0.3
MONKEY MIA (Lewy)	25°47'	113°47'	2.3	1.8	1.4	1.2	1.0	0.7

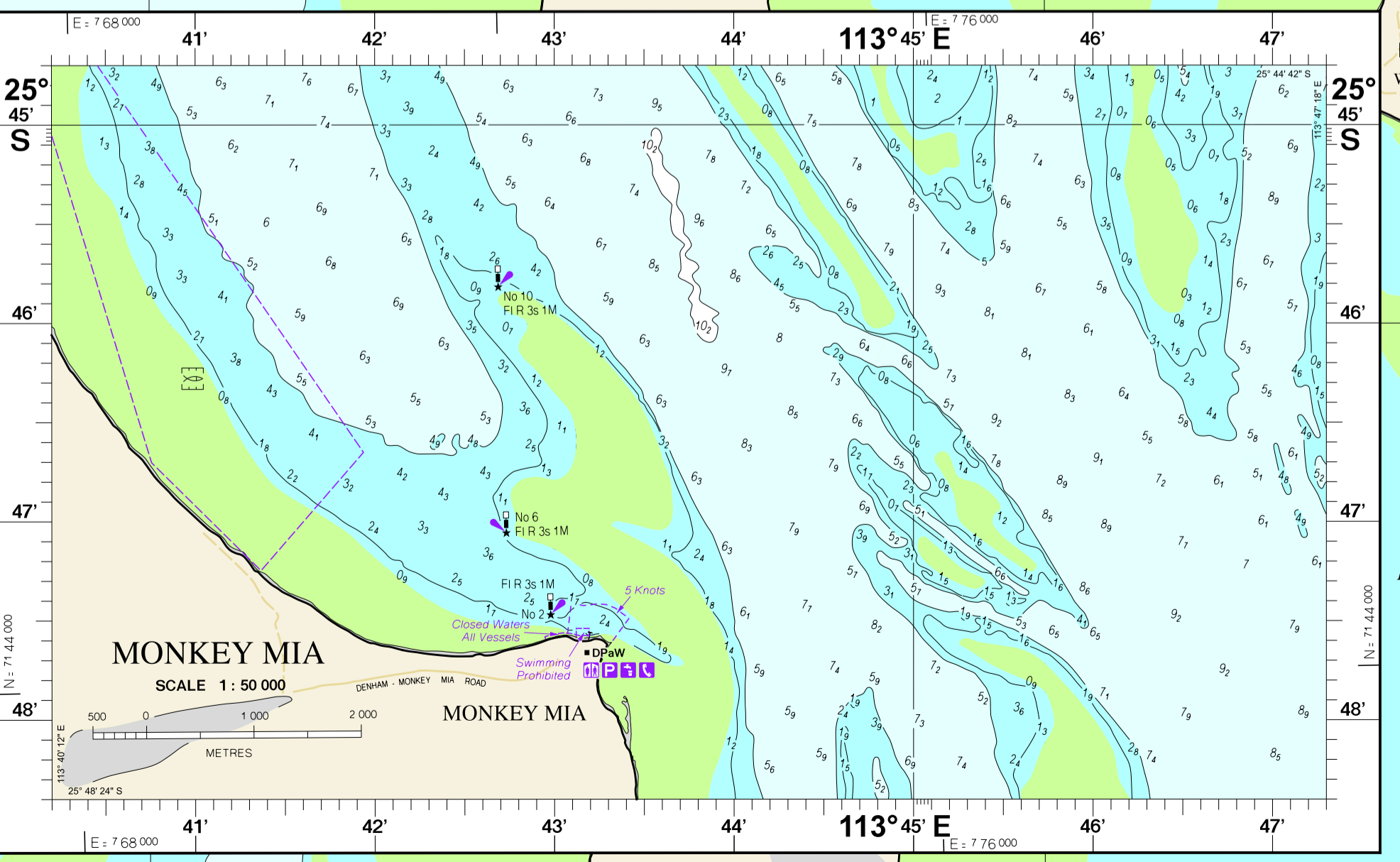
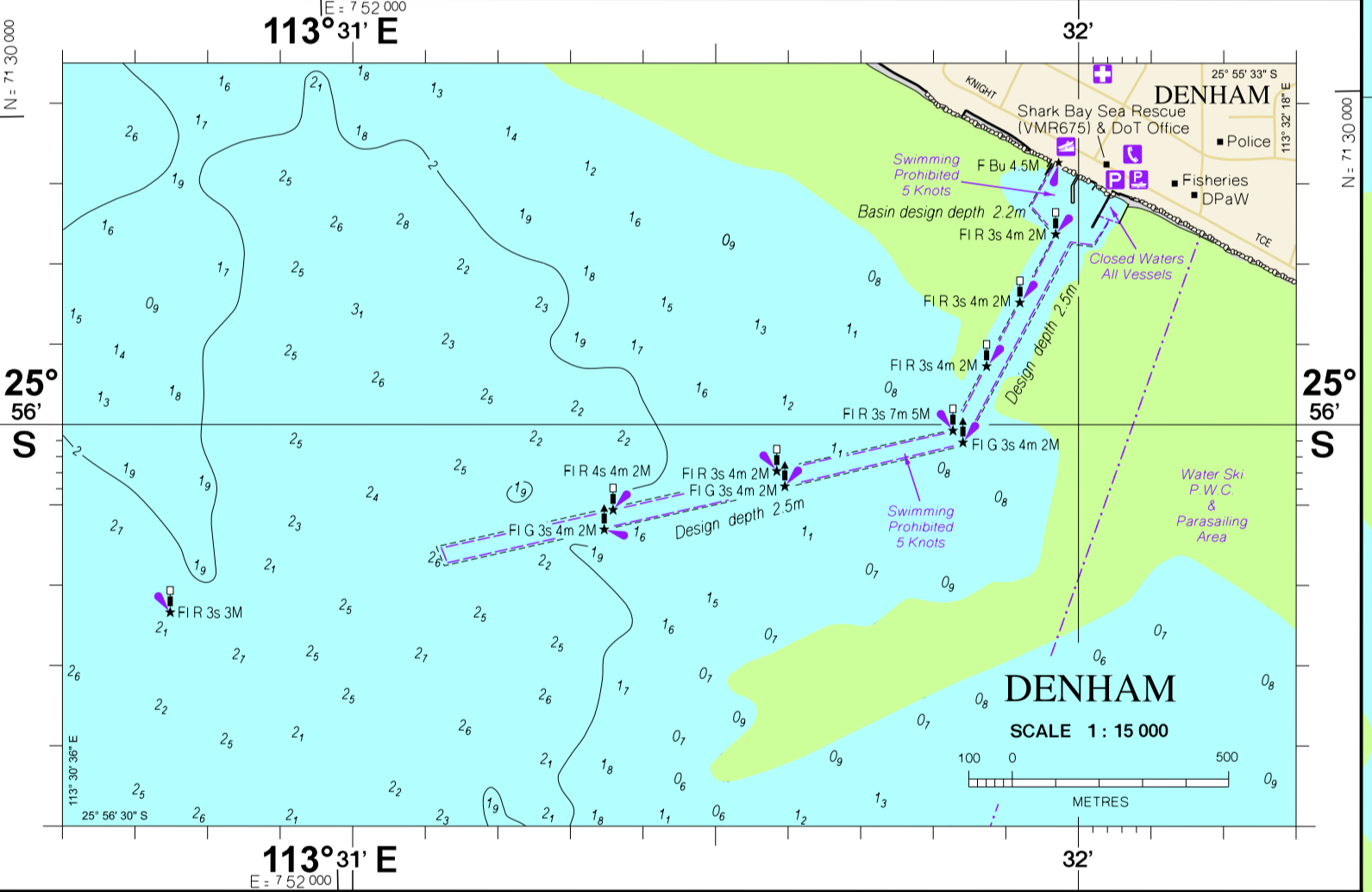


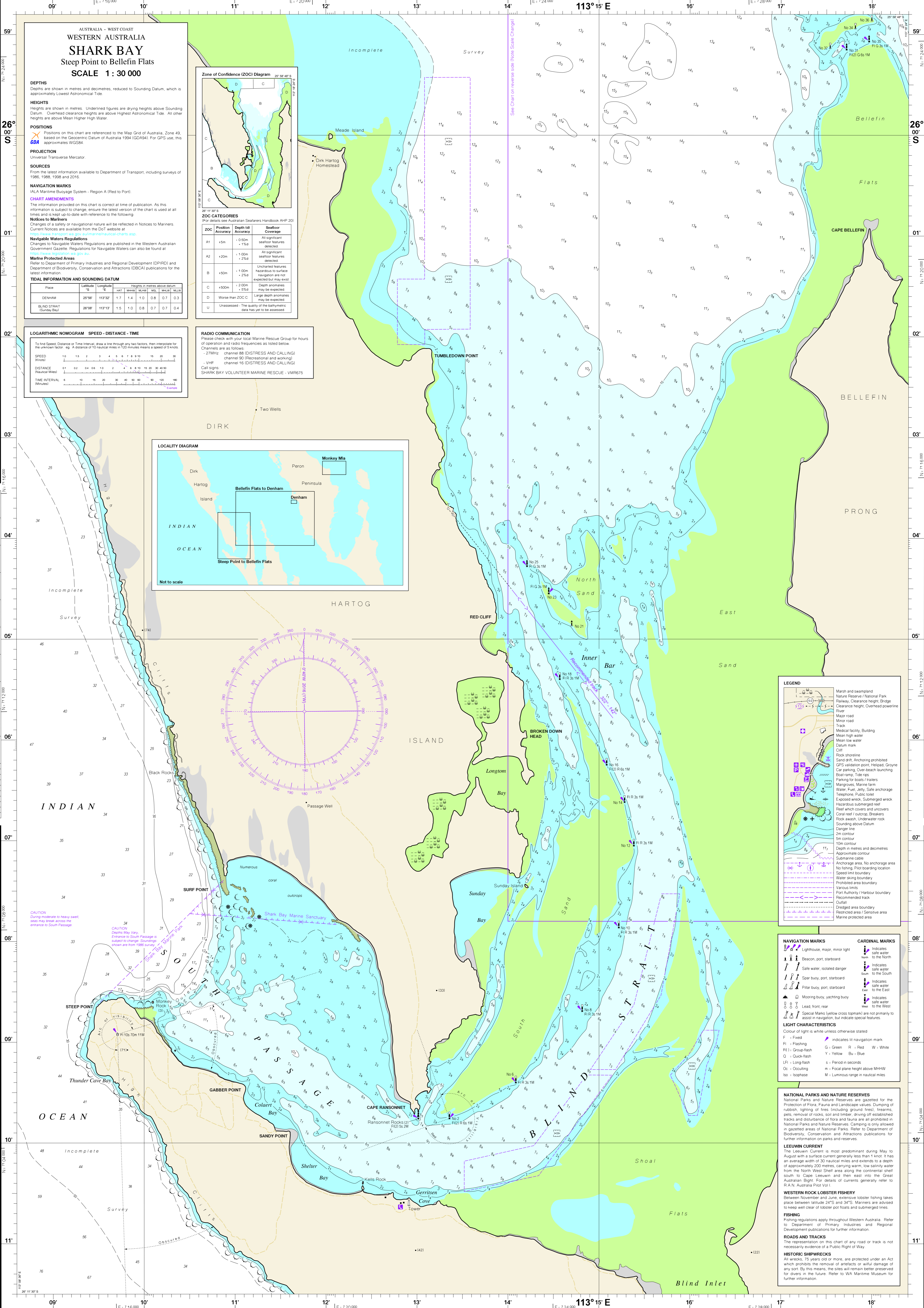
ZOC CATEGORIES (For details see Australian Seafarers Handbook AHP 201)

ZOC	Position Accuracy	Depth (d) Accuracy	Seafloor Coverage
A1	±5m	±0.50m - 15m	All significant seafloor features detected
A2	±20m	±1.00m - 25d	All significant seafloor features detected
B	±50m	±1.00m - 25d	Uncharted features hazardous to surface navigation are not expected but may exist. Depth anomalies may be expected.
C	±500m	±2.00m - 55d	Large depth anomalies may be expected.
D	Worse than ZOC C		Large depth anomalies may be expected.
U	Unassessed		The quality of the bathymetric data has yet to be assessed.

LEGEND

- Marsh and swampland
- Nature Reserve / National Park
- Railway, Clearance height, Bridge
- Clearance height, Overhead powerline
- River
- Major road
- Minor road
- Track
- Medical facility, Building
- Mean high water
- Mean low water
- Datum mark
- Cliff
- Rock shoreline
- Sand drift, Anchoring prohibited
- GPS-vision point, Helipad, Groyne
- Car parking, Over beach launching
- Boat ramp, Tide rips
- Parking for boats / trailers
- Mangroves, Fossil ground, Marine farm
- Water, Fuel, Jetty, Safe anchorage
- Telephone, Public toilet
- Explosive wreck, Submerged wreck
- Hazardous submerged reef
- Reef which covers and uncovers
- Coral reef / outcrops, Breakers
- Rock wash, Underwater rock
- Sounding above Datum, Fish haven
- Danger line
- 2m contour
- 5m contour
- 10m contour
- Depth in metres and decimetres
- Approximate contour
- Submarine cable
- Anchorage area, No anchorage area
- No fishing, Pilot boarding location
- Speed limit boundary
- Water skiing boundary
- Prohibited area boundary
- Various limits
- Port Authority / Harbour boundary
- Recommended track
- Outfall
- Dredged area boundary
- Restricted area / Sensitive area
- Marine protected area





AUSTRALIA - WEST COAST WESTERN AUSTRALIA SHARK BAY Steep Point to Bellefin Flats SCALE 1 : 30 000

DEPTHS
Depths are shown in metres and decimetres, reduced to Sounding Datum, which is approximately Lowest Astronomical Tide.

HEIGHTS
Heights are shown in metres. Underlined figures are drying heights above Sounding Datum. Overhead clearance heights are above Highest Astronomical Tide. All other heights are above Mean Higher High Water.

POSITIONS
Positions on this chart are referenced to the Map Grid of Australia, Zone 49, based on the Geocentric Datum of Australia 1994 (GDA94). For GPS use, this approximates WGS84.

PROJECTION
Universal Transverse Mercator

SOURCES
From the latest information available to Department of Transport, including surveys of 1986, 1988, 1998 and 2015.

NAVIGATION MARKS
IALA Maritime Buoyage System - Region A (Red to Port)

CHART AMENDMENTS
The information provided on this chart is correct at time of publication. As this information is subject to change, ensure the latest version of the chart is used at all times and is kept up-to-date with reference to the following:

Notices to Mariners
Changes of a safety or navigational nature will be reflected in Notices to Mariners. Current Notices are available from the DoT website at www.marine.nauticalcharts.gov.au.

Navigable Waters Regulations
Changes to Navigable Waters Regulations are published in the Western Australian Government Gazette. Regulations for Navigable Waters can also be found at www.wa.gov.au.

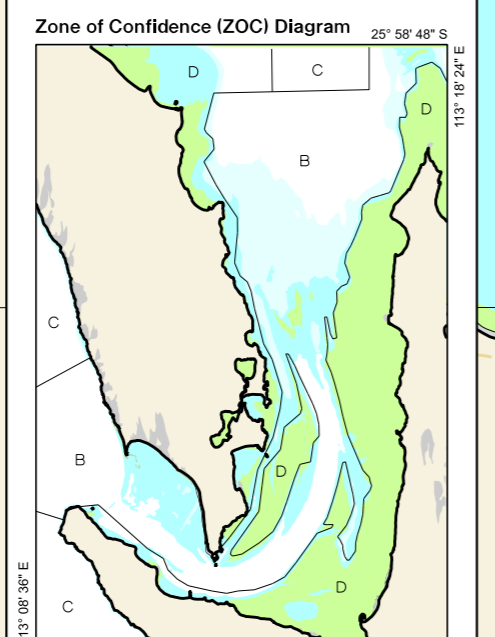
Marine Protected Areas
Refer to Department of Primary Industries and Regional Development (DPIRD) and Department of Biodiversity, Conservation and Attractions (DBCA) publications for the latest information.

TIDAL INFORMATION AND SOUNDING DATUM

Place	Latitude	Longitude	Mean High Water	Mean Low Water	Lowest Astronomical Tide	Height in metres above datum
DENHAM	29°56'	113°32'	1.7	1.4	1.0	0.8 0.7 0.3
BLIND STRAIT (Sunday Bay)	28°08'	113°13'	1.5	1.0	0.8	0.7 0.7 0.4

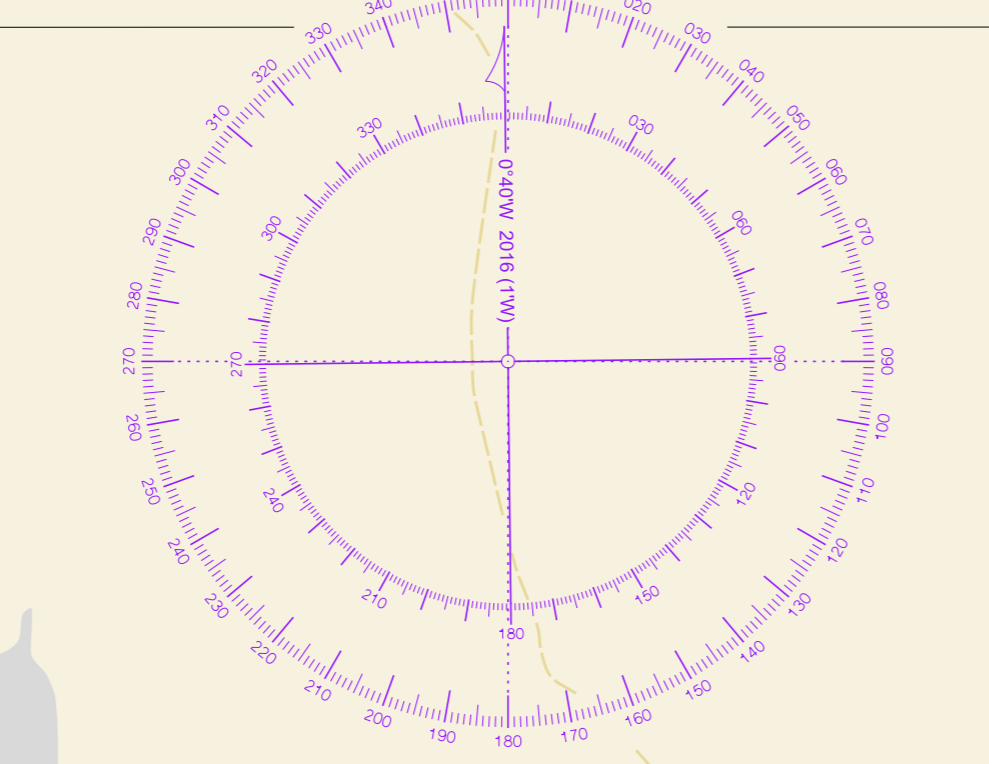
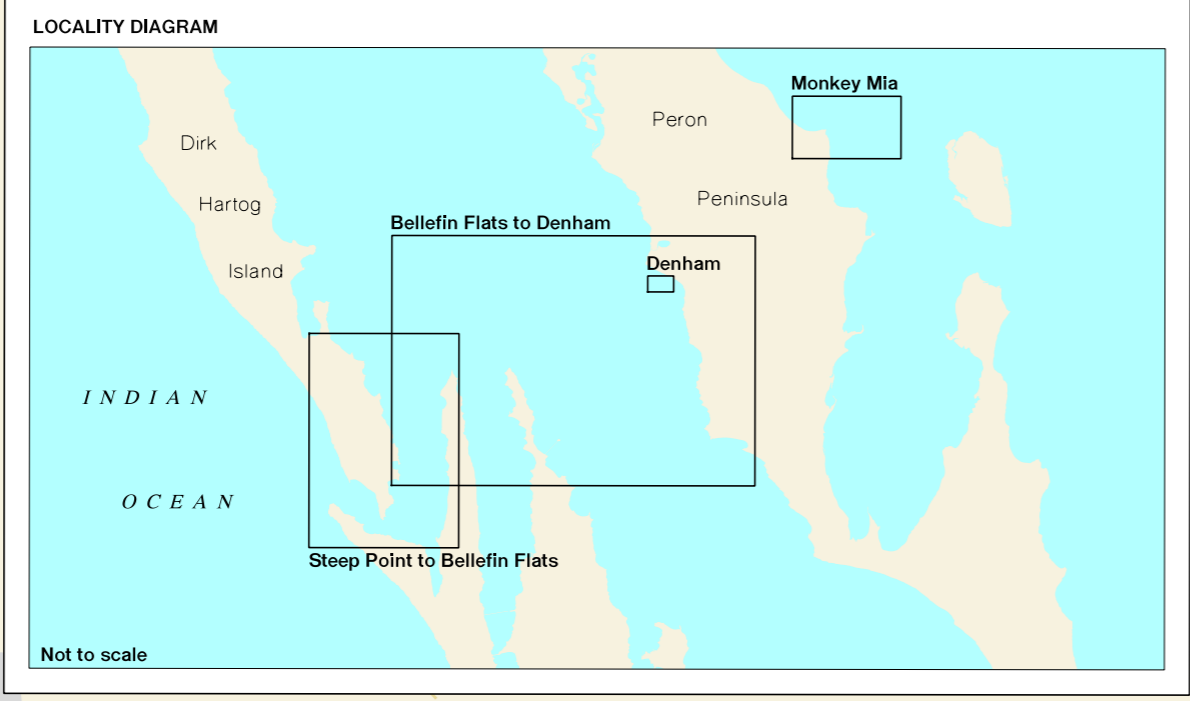


RADIO COMMUNICATION
Please check with your local Marine Rescue Group for hours of operation and radio frequencies as listed below.
Channels are as follows:
- 27MHz channel 88 (DISTRESS AND CALLING)
channel 90 (Recreational and working)
- VHF channel 16 (DISTRESS AND CALLING)
Call signs: SHARK BAY VOLUNTEER MARINE RESCUE - VMR675



ZOC CATEGORIES
(For details see Australian Seafarers Handbook AHP 20)

ZOC	Position Accuracy	Depth Accuracy	Seafloor Coverage
A1	±5m	±0.50m ±15%	All significant seafloor features detected
A2	±20m	±1.00m ±25%	All significant seafloor features detected
B	±50m	±1.00m ±25%	Uncharted features hazardous to surface navigation are not expected but may exist
C	±100m	±2.00m ±50%	Depth anomalies may be expected
D	Worse than ZOC C		Large depth anomalies may be expected
U	Unassessed		The quality of the bathymetric data has yet to be assessed



LEGEND

NAVIGATION MARKS

NATIONAL PARKS AND NATURE RESERVES
National Parks and Nature Reserves are gazetted for the protection of flora, fauna and landscape values. Dumping of rubbish, lighting of fires (including ground fires), firearms, pets, removal of rocks, soil and timber, driving off established tracks and disturbance of flora and fauna are all prohibited in National Parks and Nature Reserves. Camping is only allowed in gazetted areas of National Parks. Refer to Department of Biodiversity, Conservation and Attractions publications for further information on parks and reserves.

LEEUEW CURRENT
The Leeuwin Current is most predominant during May to August with a surface current generally less than 1 knot. It has an average width of 30 nautical miles and extends to a depth of approximately 200 metres, carrying warm, low salinity water from the North West Shelf area along the continental shelf south to Cape Leeuwin and then east into the Great Australian Bight. For details of currents generally refer to RAN Australia Pilot Vol 1.

WESTERN ROCK LOBSTER FISHERY
Between November and June, extensive lobster fishing takes place between latitudes 24°S and 34°S. Mariners are advised to keep well clear of lobster pot floats and submerged lines.

FISHING
Fishing regulations apply throughout Western Australia. Refer to Department of Primary Industries and Regional Development publications for further information.

ROADS AND TRACKS
The representation on this chart of any road or track is not necessarily evidence of a Public Right of Way.

HISTORIC SHIPWRECKS
All wrecks, 75 years old or more, are protected under an Act which prohibits the removal of artefacts or willful damage of any sort. By this means, the sites will remain better preserved for divers in the future. Refer to WA Maritime Museum for further information.